

- LEGEND**
- Development Boundary
  - Fault at rockhead
  - Thrust Fault; barbs on hanging wall side
  - Unnamed Igneous Intrusion, Late Silurian to Early Devonian - Felsic-Rock
  - Unnamed Extrusive Rocks, Silurian to Devonian - Felsic Lava and Felsic Tuff
  - Unnamed Extrusive Rocks, Silurian to Devonian - Mafic Lava and Mafic Tuff
  - Argyll Group – Metalmestone
  - Argyll Group – Metalmestone
  - Southern Highland Group - Lava, Tuff, Volcaniclastic Rock and Sedimentary Rock
  - Southern Highland Group - Psammite and Pelite
  - Unnamed Extrusive Rocks, Neoproterozoic - Mafic Lava and Mafic Tuff
  - Unnamed Igneous Intrusion, Neoproterozoic - Mafic Igneous-Rock

**NOTES**

Contains Ordnance Survey Data © Crown copyright and database rights 2021 Ordnance Survey 0100031673

Contains public sector information licensed under the Open Government Licence v3.0.

© UKRI 2021

**ISSUE PURPOSE**

FINAL

**PROJECT NUMBER**

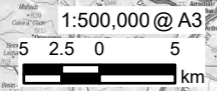
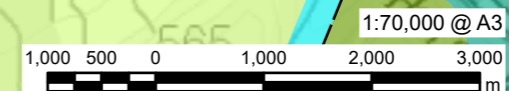
60570241

**FIGURE TITLE**

Bedrock Geology

**FIGURE NUMBER**

Figure 10.2



This drawing has been prepared for the use of AECOM's client. It may not be used, modified, reproduced or relied upon by any party that uses or relies on this drawing without AECOM's express written consent. Do not scale this document. All measurements must be obtained from the stated dimensions.